



# MONTGOMERY

## FURNITURE COLLECTION



Virginia  
Correctional  
Enterprises



[www.GoVCE.net](http://www.GoVCE.net) (800) 823-2823

# Workforce Development

## About Us

Virginia Correctional Enterprises (VCE) is a self-supporting agency designed to provide incarcerated individuals with job training, skills development, and employment opportunities within the Virginia Department of Corrections. Established over 85 years ago by the Virginia General Assembly, VCE focuses on reducing recidivism by equipping inmates with the tools they need to reintegrate into society successfully.

VCE's mission is to strengthen future employment opportunities and marketable skills for inmate workers through on-the-job training and work development programs, supported by the production and delivery of quality products and services to our customers. VCE workforce development programs are voluntary, inmate workers apply, interview and are accepted into a program based on a predetermined set of criteria for each program.

## Preparing for a Successful Reentry

### Soft Skills Development

Inmates are trained in critical interpersonal and professional skills such as communication, teamwork, time management, accountability, and the principles of lean practices. These are essential for their future success in the workplace, allowing them to adapt and thrive in a variety of professional environments.

### Specialized Skill Training

The program offers hands-on training in industries such as furniture design and manufacturing, AutoCAD, and maintenance and sanitation solutions. This training helps prepare inmates for roles that require technical expertise, making them more competitive candidates when seeking employment after release.

### Registered Apprenticeships & Certifications

Through partnerships with industry professionals, VCE offers Registered Apprenticeships and vendor certifications. These provide inmates with recognized credentials that enhance their employability and make them more attractive to potential employers in the private sector.

### Workforce Development Programs

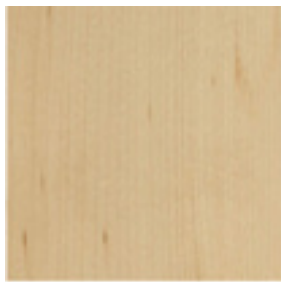
The overarching goal of VCE's workforce development programs is to equip inmates with the practical skills and knowledge necessary to secure meaningful employment after their release.

# Montgomery Collection

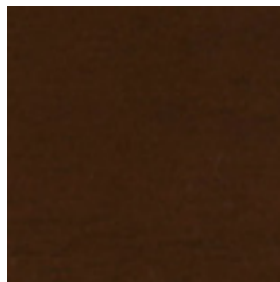
The VCE Montgomery furniture line features contemporary modular case goods crafted from maple wood. Designed for the modern office utilizing the work wall concept. It offers 84-inch-high overheads along with generous storage and workspace.

*All hardware is finished in silver, with locks matched to the hardware. Grommets are available in gray or black.*

## Available Stains



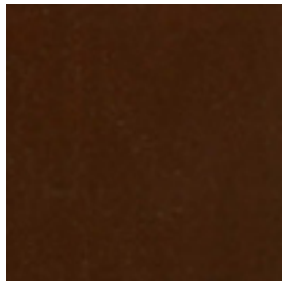
Natural Maple  
M00



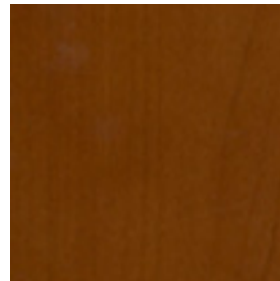
Walnut  
M01



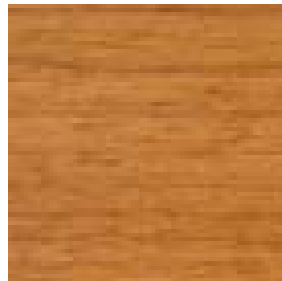
Golden Oak on Maple  
M30



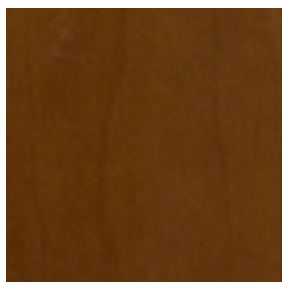
Mahogany  
M48



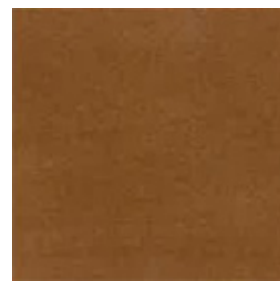
Medium Brown Cherry  
M51



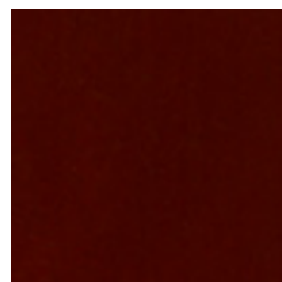
Cherry  
M55



Victorian Cherry  
M57



Medium Dark Cherry  
M59



Medium Red Cherry  
M70

*Additional products and fabrics are available - please contact your VCE sales/design representative for a personalized quote.*

# Desks



## Desk

---

MNTG-3108	30" D x 60" W x 30" H
MNTG-3007	30" D x 66" W x 30" H
MNTG-3008	30" D x 72" W x 30" H
MNTG-3016	36" D x 72" W x 30" H



## Desk, Bow Front, Full Modesty

---

MNTG-3095	30/36" D x 72" W x 30" H
-----------	--------------------------



## Desk, "b" Top, Full Modesty

---

MNTG-3131	30/42" D x 60" W x 30" H
MNTG-3132	30/42" D x 66" W x 30" H
MNTG-3133	30/42" D x 72" W x 30" H



## Desk, "d" Top, Full Modesty

---

MNTG-3134	30/42" D x 60" W x 30" H
MNTG-3135	30/42" D x 66" W x 30" H
MNTG-3136	30/42" D x 72" W x 30" H



## Desk, Side Mount, Pen Top

---

MNTG-3037

30" D x 66" W x 30" H



## Desk, Peninsula Top, Full Modesty, Right

---

MNTG-3122

30" D x 60" W x 30" H

MNTG-3123

30" D x 66" W x 30" H

MNTG-3027

30" D x 72" W x 30" H



## Desk, Peninsula Top, Full Modesty, Left

---

MNTG-3124

30" D x 60" W x 30" H

MNTG-3125

30" D x 66" W x 30" H

MNTG-3029

30" D x 72" W x 30" H



## Credenza, 18" Modesty Panel

---

MNTG-3109

24" D x 60" W x 30" H

MNTG-3110

24" D x 66" W x 30" H

MNTG-3003

24" D x 72" W x 30" H



## Credenza, Fullbank, 4 Doors

---

MNTG-3114

24" D x 60" W x 30" H

MNTG-3115

24" D x 66" W x 30" H

MNTG-3052

24" D x 72" W x 30" H

# Credenzas, Returns & Bridges



## Credenza, Buffet Height, 4 Door, 4 Drawer

---

MNTG-3116

24" D x 60" W x 36" H

MNTG-3117

24" D x 66" W x 36" H

MNTG-3118

24" D x 72" W x 36" H



## Return, 18" Privacy Panel, Right

---

MNTG-3138

24" D x 42" W x 30" H

MNTG-3011

24" D x 48" W x 30" H



## Return, 18" Privacy Panel, Left

---

MNTG-3137

24" D x 42" W x 30" H

MNTG-3120

24" D x 48" W x 30" H



## Bridge

---

MNTG-3058

24" D x 42" W x 30" H

MNTG-3044

24" D x 48" W x 30" H

# Hutches, Pedestals & Storage



Hutch, 72" 4 Door, 78" 6 Door w/Task Lights

---

MNTG-3013

14" D x 72" W x 55" H



Pedestal, Freestanding, under worksurface, movable, BBF

---

MNTG-3017

20" D x 16" W x 28" H

MNTG-3005

25" D x 16" W x 28" H



Pedestal, Freestanding, under worksurface, movable, FF

---

MNTG-3006

20" D x 16" W x 28" H

MNTG-3015

25" D x 16" W x 28" H



Storage

---

MNTG-3043

35" D x 24" W x 84" H

# Lateral Files & Bookcases



## Lateral File, 2 Drawer

---

MNTG-3020

24" D x 30" W x 29" H

MNTG-3002

24" D x 36" W x 29" H



## Lateral File, 4 Drawer

---

MNTG-3121

24" D x 30" W x 54" H

MNTG-3004

24" D x 36" W x 54" H



## Bookcase

---

MNTG-3018 (1 SHELF)

16" D x 36" W x 29" H

MNTG-3009 (5 SHELF)

16" D x 36" W x 84" H



### Combo Cabinet

---

MNTG-3023	24" D x 24" W x 84" H
MNTG-3021	24" D x 30" W x 84" H
MNTG-3001	24" D x 36" W x 84" H



### TABLE, 18" DRUM BASE

---

MNTG-3092	42" DIA x 30" H
MNTG-3093	48" DIA x 30" H



### Table

---

MNTG-3051 (END)	22" D x 22" W x 22" H
MNTG-3057 (COFFEE)	20" D x 42" W x 16" H



# Montgomery Furniture Collection Specifications

## Worksurfaces

- Worksurfaces are 1-1/8" finished maple wood veneer over engineered wood substrate.
- Reveal wood edge on all sides.

## Side Panels / Back Panels

- Panels are 3/4" finished on both sides with maple wood veneer over substrate.

## Pedestals and Drawers

- Drawer fronts are 3/4" thick maple wood veneer over Substrate.
- Drawer fronts have maple wood edge banding on all sides.
- Interior drawer dove tail construction from birch plywood.
- Pedestal drawers open with silver bar pull, located on center.
- Lateral file drawers, open with two front silver bar pulls.
- Box drawers, File drawers, and Lateral file drawers are five sided with ball bearing glides.
- Pedestal file drawers are standard with file support rails, accepting letter hanging files, allowing front to back filing.
- Lateral file drawers are standard with file support rails, accepting letter or legal hanging files, allowing front to back or side to side filing.
- Drawers are full extension ball bearing slides.
- Lateral file drawers have interlocking safety system allowing only one drawer to be opened at a time, standard on all models.
- Box drawers and file drawers are 20" (500mm) deep.
- The floor levelers are adjustable allowing 1" height adjustment.

## Lock Specifications

- Locks are available in silver finish.
- Lock core can be changed allowing multiple units to be keyed alike.
- One lock is standard on Box/Box/File pedestals, File/File pedestals, and Lateral files.

## Finishes / Color Specifications

- Unit color may be ordered in any of the nine finishes (5 standard, 4 optional).

## Hutch and Cabinet Doors

- Are available in all finishes with locks.

## Hardware Colors

- Pulls are available with silver bar pull.
- Metal pedestal legs on desks are available in silver or black.
- Locks available in silver.

## Grommets

- Grommets have a diameter of 2-3/8". Available in gray only.



VIRGINIA  
CORRECTIONAL  
ENTERPRISES

## Creating Quality Products and Promising Futures

### Customer Contacts

#### Eastern Region Sales Furniture/ Case Goods - Steven Bennett

- 804-338-0080
- Steven.Bennett@vadoc.virginia.gov

#### Northern Region Sales Furniture/Case Goods - Julia Batta

- (804) 510-3721
- Julia.Batta@vadoc.virginia.gov

#### Central Region Sales Furniture/Case Goods - June Duvall

- 804-759-8421
- June.Duvall@vadoc.virginia.gov

#### Western Region Sales Furniture/ Case Goods

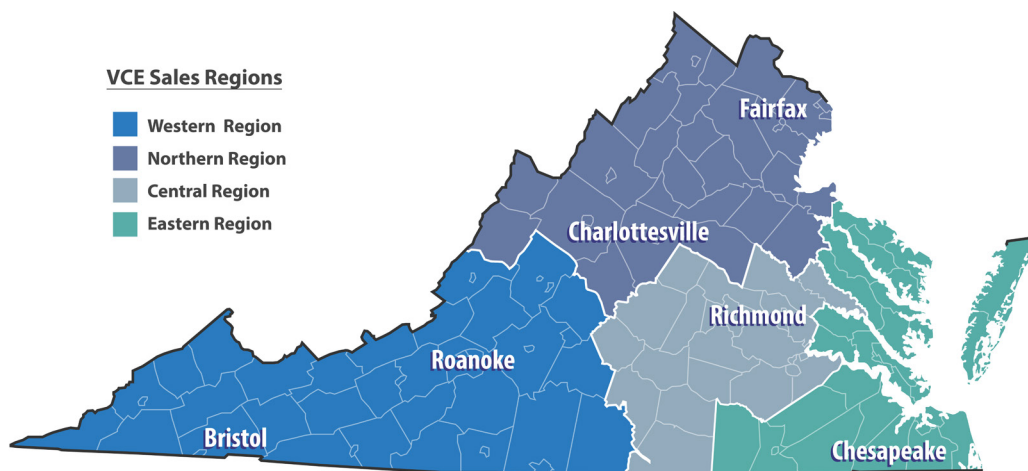
- Contact Sales Manager - Robert Tilkey
- 804-241-8570
  - Robert.Tilkey@vadoc.virginia.gov

#### Sales Manager - Robert Tilkey

- 804-241-8570
- Robert.Tilkey@vadoc.virginia.gov

#### Design Manager - Barbara Miner

- 804-840-5029
- Barbara.Miner@vadoc.virginia.gov



### Customer Service

1-800-823-2823

vcecustsrv@vadoc.virginia.gov



Virginia  
Correctional  
Enterprises



8030 White Bark Terrace | North Chesterfield, VA 23237  
Customer Service  
(800) 823-2823  
[vcecustsrvc@vadoc.virginia.gov](mailto:vcecustsrvc@vadoc.virginia.gov)

Printed by Virginia Correctional Enterprises Digital Print Facility